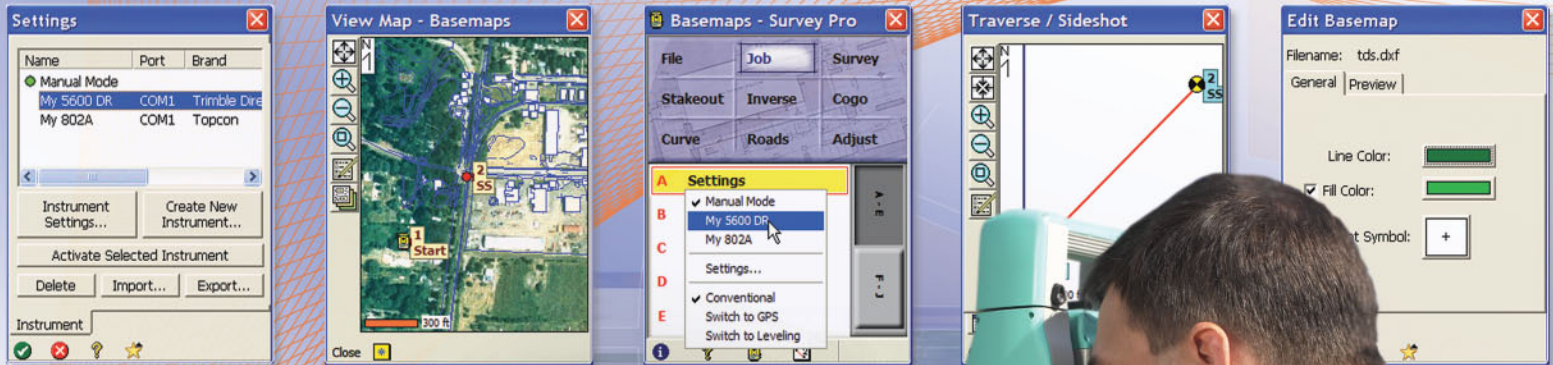


New Survey Pro 4.1



The #1 choice since 1995* — productive, reliable, comprehensive

TDS didn't make Survey Pro™ the #1 surveying software. Surveyors did. And here's why: Survey Pro gives you a complete set of capabilities for all your survey projects. It's fast, easy to use and reliable, so you can work more productively in the field. And because so many survey professionals already use Survey Pro, any surveyors you hire probably already know how to use it. What's more, Survey Pro works with total stations from every major manufacturer, and most major brands of GPS receivers, too.

When you choose Survey Pro, you get software built on more than 20 years of experience. You also get software that's continually enhanced thanks to input from surveyors in the field. Many of our people—including members of the Survey Pro development team—have worked as

surveyors. So we understand how a small change to an existing function can help you be more productive or make your job easier. That's why—and how—we continuously improve Survey Pro, along with all our hardware and software.

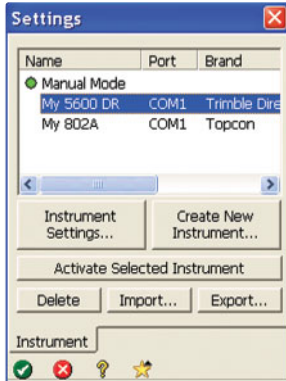
And the best way to use Survey Pro is on a TDS handheld data collector. That's because our TDS Recon™ and Ranger™ were both developed from the ground up to work with Survey Pro. The Recon and Ranger run Survey Pro functions and routines quickly, making it easy to use all of the software's capabilities.



*According to Business News Publishing Company's "Surveying and Mapping Industry Studies," 1995 - 2004, TDS has held a U.S. market share of more than 50 percent for data collector software. Total includes TDS sales and TDS software sold by dealers and TDS partner companies since 1995.

Enhanced capabilities boost productivity.

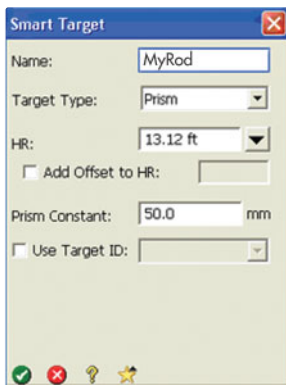
With Instrument Manager, you can pre-configure settings for your total stations, GPS receivers, levels and other instruments. Activate the instrument you want to use, and Survey Pro is ready to communicate with it.



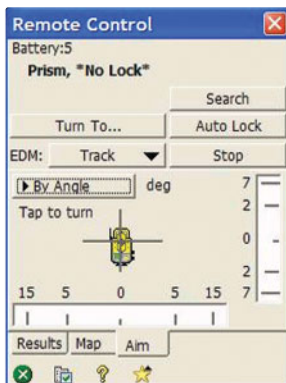
Basemaps let you import a drawing or image such as an aerial photo of the survey site. This provides an additional reference that makes it easier to stake points or identify landmarks.



Smart Target assigns the appropriate target to the backsight point and stores the data.



With Survey Pro Robotics you get fine-turning capability, with a unique graphical interface that lets you turn your total station remotely and precisely.



TDS continually improves Survey Pro with capabilities that make your job easier, help you work more productively and get the job done right. Some of the most recent feature enhancements include:

Instrument Manager—Pre-configured settings allow you to communicate automatically with different instruments

Survey Pro's Instrument Manager makes it easy to pre-configure settings for total stations, GPS receivers, levels and other instruments. After initially entering your settings, simply choose your instrument, and Survey Pro is ready to work with it. And once settings are entered it's easy to switch back and forth between instruments. You can also copy your instrument profile to other data collectors so your crews arrive on-site ready to go.

Basemaps—Reference maps help you identify staking points

Basemaps let you use a drawing or graphic as a reference background for a map, making it easier to identify landmarks and staking points. You can import basemaps in both GeoTIFF and DXF file formats.

Smart Target—Configure prisms and manage settings

Smart Target Manager lets you create and edit targets for your foresight and backsight. It saves time by allowing you to switch effortlessly back and forth between prism and prismless measurement modes and shows you right away which target is in use ("Active Target").

GPS Start Survey Wizard—Make GPS connections easier

The Start Survey Wizard on Survey Pro GPS™ takes you through a streamlined GPS setup procedure. It's intuitive, and it helps ensure reliable GPS connections. You can start an RTK receiver and configure post-processing data collection in one step. You can also store RTK raw data and post-processing raw data simultaneously. New IP modem support lets you connect to an Internet IP address to receive streaming RTK correction data from a remote base receiver.

Turn-to routines—Fast, accurate remote aiming

Survey Pro Robotics™ makes it easy to aim your robotic total station remotely. Simply tap on a location from the standard map display on your Recon or Ranger to aim the total station and reacquire a lock on the prism. Survey Pro also includes a fine-turning routine with a unique graphical interface that lets you make even precise turns remotely. Customers with Trimble robots can take advantage of GeoLock™ robotic target search functions to regain lock from a distance with just the push of a button.

LandXML functions—Import and export points, lines and more

Survey Pro allows you to work with LandXML files on your data collector, eliminating repetitive or manual data input. You can import and export points, alignments, polylines and parcels. Survey Pro imports alignments as alignments or polylines; it imports parcels as polylines that you can place on a dedicated layer for parcels.

All the tools you need to do the job right.

Survey Pro gives you comprehensive tools to collect, work with and organize your survey data. Use it for traverse, sideshot, coordinate geometry, staking and adjustment routines. Edit all point properties in the field, including attributes and geodetic information. Whatever type of surveying you do, you can do it with Survey Pro.

You can also call on top-ranked** TDS technical support, in the field or at the office. In most cases you'll be back to work within five minutes. And TDS tech support is always free; no by-the-hour charges or support contracts. Plus, you can pick up tips from other surveyors through the TDS message board at www.tdsurvey.com/RPLS.

Survey Pro's full spectrum of data collection tools includes:

- **Leveling:** Survey Pro works with most types of digital levels, recording level loop data so you can eliminate repetitive or manual data input.
- **Mechanical:** Survey Pro also works with mechanical total stations, immediately reducing measured data to a point, which makes it easier to use COGO routines, analyze data and check results. And your data is safely stored in your Recon or Ranger data collector.
- **Robotics:** Survey Pro Robotics reliably controls robotic total stations with an easy-to-use interface that allows you to focus on the job at hand. Intuitive and useful search tools, active maps, automatic repetition and much more make Survey Pro the obvious robotic data collection choice.
- **GPS:** With Survey Pro GPS, you can use your digital cell phone in place of a radio link for GPS communications. You can save time by starting an RTK receiver and configuring post-processing data collection in one step, as well as by storing data simultaneously.
- **Reflectorless:** Survey Pro functions improve accuracy on hard-to-reach corners when using a reflectorless total station. And Smart Targets make it easy to switch between prism and reflectorless settings.

It keeps getting better

Today's Survey Pro is better than ever, with new features and function enhancements to make your work flow faster and easier. At the same time, TDS continues updating Survey Pro to ensure it supports all the latest instruments. And we actively seek feedback from surveyors like you. So go ahead—give us a call or send an e-mail to tell us how we can make Survey Pro work even better for you.



Survey Pro works with total stations from every major manufacturer and most major brands of GPS receivers. Use it with the TDS Ranger data collector (shown) for easy access to all of Survey Pro's features and capabilities.

**In a 2002 survey by Business News Publishing, surveyors named Survey Pro the best data collection software in seven categories, including technical support.

Survey Pro Software Function Table Highlights

- Survey Standard
- ▲ Survey Pro
- ◆ Survey Pro Robotics
- Survey Pro GPS
- ★ Survey Pro Max

TITLE BAR/TASK BAR					
Toggle collection mode (total station/GPS)	●	▲	◆	■	★
Battery status indicator	●	▲	◆	■	★
Map access button	●	▲	◆	■	★
Editable quick picks	●	▲	◆	■	★
FILE					
Import/export	●	▲	◆	■	★
JOB, .CR5, .TXT, .GPS, LandXML files	●	▲	◆	■	★
Transfer - multiple modes	●	▲	◆	■	★
JOB					
Edit points/polylines	●	▲	◆	■	★
Edit alignments	▲	◆	■	★	
Auto linework (real time)	▲	◆	■	★	
View raw data	●	▲	◆	■	★
View DTM	●	▲	◆	■	★
Manage layers	●	▲	◆	■	★
Calculator	●	▲	◆	■	★
AU Conversions	●	▲	◆	■	★
SURVEY (CONVENTIONAL MODE)					
Backsight setup	●	▲	◆	■	★
Traverse/sideshot	●	▲	◆	■	★
Repetition shots	●	▲	◆	■	★
Multiple sideshots	●	▲	◆	■	★
Distance/angle offset	●	▲	◆	■	★
Corner & 2 lines	●	▲	◆	■	★
Corner & angle	●	▲	◆	■	★
Corner & offset	●	▲	◆	■	★
Corner & plane	●	▲	◆	■	★
Shoot from 2 ends	●	▲	◆	■	★
Resection	●	▲	◆	■	★
Remote elevation	●	▲	◆	■	★
Check point	●	▲	◆	■	★
Bluetooth support (Recon)	●	▲	◆	■	★
Solar observation	▲	◆	■	★	
Remote control	◆	■	★		
Fine turning	◆	■	★		
Tap to turn	◆	■	★		
Surface Scan*	▲	◆	■	★	
STAKEOUT					
Cut/fill to design grade	●	▲	◆	■	★
Generate cut sheet data	●	▲	◆	■	★
Turn gun to stake with 2-D and 3-D modes	▲	◆	■	★	
Remote stake from rod	▲	◆	■	★	
Stake points/list of points	●	▲	◆	■	★
Stake to line/polyline	●	▲	◆	■	★
Offset staking	▲	◆	■	★	
Slope staking from line or point	▲	◆	■	★	

SURVEY STANDARD™ is a complete data collection package for surveyors. It contains a complete COGO suite as well as traverse, sideshot and staking routines.

SURVEY PRO shares all Survey Standard functions and adds advanced road layout routines, advanced staking routines, attribute collection, DTM routines and much more.

Your local TDS dealer

STAKEOUT, cont.					
Stake to line and offset	●	▲	◆	■	★
Stake to curve and offset	●	▲	◆	■	★
Stake to spiral and offset	▲	◆	■	★	
Stake DTM	▲	◆	■	★	
Define a location	●	▲	◆	■	★
Where is next point	●	▲	◆	■	★
Slope stake from a point	▲	◆	■	★	
Station staking	▲	◆	■	★	
INVERSE					
Multiple types	●	▲	◆	■	★
COGO					
Point in direction	●	▲	◆	■	★
Intersection	●	▲	◆	■	★
Offset line/points	●	▲	◆	■	★
Corner angle	●	▲	◆	■	★
Compute area	●	▲	◆	■	★
Triangle solutions	●	▲	◆	■	★
Map check	●	▲	◆	■	★
Predetermined area	●	▲	◆	■	★
HD/VD to/from SD/ZA	●	▲	◆	■	★
Station & offset	▲	◆	■	★	
CURVE					
Curve solution	●	▲	◆	■	★
PI and tangents	▲	◆	■	★	
3-point curve	●	▲	◆	■	★
Radius point	●	▲	◆	■	★
Tangent to circles	●	▲	◆	■	★
Curve layout	●	▲	◆	■	★
Traverse on a curve	●	▲	◆	■	★
Parabolic curve/layout	●	▲	◆	■	★
Straight grade	●	▲	◆	■	★
Spiral/spiral layout	▲	◆	■	★	
Traverse on a spiral	▲	◆	■	★	
ROADS					
Create/edit templates (cross-sections)	▲	◆	■	★	
Create/edit alignments	▲	◆	■	★	
Save alignment to file	▲	◆	■	★	
Add super elevations to road	▲	◆	■	★	
Add widenings to road	▲	◆	■	★	
Road stakeout	▲	◆	■	★	
ADJUST					
Scale/translate/rotate	●	▲	◆	■	★
Traverse adjust	●	▲	◆	■	★
SETTINGS (CONVENTIONAL MODE)					
Instrument setup & communications	●	▲	◆	■	★
Instrument Manager	●	▲	◆	■	★
Smart Targets	●	▲	◆	■	★
Units	●	▲	◆	■	★
Feet/survey feet/meters	●	▲	◆	■	★
Degrees/grads	●	▲	◆	■	★

SURVEY PRO GPS shares nearly all the Survey Pro functions, and it provides the capability to collect data from RTK GPS receivers at centimeter-level accuracy. TDS GPS software is easy to use, reduces training and simplifies setups. It provides meaningful error messages if anything goes wrong. All staking screens work with the GPS receiver.

SETTINGS (CONVENTIONAL MODE), cont.					
Azimuth/bearing	●	▲	◆	■	★
North/south azimuth	●	▲	◆	■	★
Various unit format files	●	▲	◆	■	★
Control/description files	●	▲	◆	■	★
Feature code files	●	▲	◆	■	★
Surveying	●	▲	◆	■	★
Prompt for description	●	▲	◆	■	★
Prompt for height of rod	●	▲	◆	■	★
Prompt for layer	●	▲	◆	■	★
Prompt for attributes	●	▲	◆	■	★
Scale factor	●	▲	◆	■	★
Stakeout	●	▲	◆	■	★
Prompt for layer	●	▲	◆	■	★
Prompt for attributes	●	▲	◆	■	★
Repetition shot tolerances	●	▲	◆	■	★
Auto time-stamp interval	●	▲	◆	■	★
Alphanumeric point names	●	▲	◆	■	★
Basemaps	▲	◆	■	★	
SURVEY (GPS MODE)					
Bluetooth support (Recon, Ranger X)	■	★			
Cell phone/radio modem coms	■	★			
GPS status	■	★			
Base/rover setup (Start Survey Wizard)	■	★			
Control points	■	★			
Collect point, features, offset	■	★			
Projection setup/stats	■	★			
Remote elevation	■	★			
SETTINGS (GPS MODE)					
Store GPS raw data	■	★			
Post process	■	★			
Recording interval	■	★			
Data collect with map projection & geoid files	■	★			
Data collect with local transformation	■	★			
Real-time coordinate generation	■	★			
Adjust coordinates to latest localization	■	★			
All stakeout functions with GPS receiver	■	★			
OPTIONAL LEVELING MODULE					
Digital levels	●	▲	◆	■	★
Optical levels	●	▲	◆	■	★
Turn to benchmark	●	▲	◆	■	★
Turn to turning point	●	▲	◆	■	★
Sideshot	●	▲	◆	■	★
Stakeout	●	▲	◆	■	★
Peg test	●	▲	◆	■	★
Closure reports	●	▲	◆	■	★
Level through existing points	●	▲	◆	■	★
Please note: This chart is an abbreviated general guide to software functions. All specifications are subject to change without notice.					
*Requires motorized instrument					

SURVEY PRO ROBOTICS shares all Survey Pro functions, works with all major brands of robotic total stations, and adds graphical staking screens.

SURVEY PRO MAX™ is the ultimate field software. It integrates Survey Pro Robotics and Survey Pro GPS functions, enabling you to use the same job files with both GPS receivers and total stations.



P.O. Box 947, Corvallis, OR 97339

©2005 Tripod Data Systems, Inc. All rights reserved. Recon is a registered trademark of Tripod Data Systems. Tripod Data Systems, the TDS triangles logo, the TDS icons, GeoLock, Ranger, Survey Pro, Survey Standard, Survey Pro GPS, Survey Pro Robotics and Survey Pro Max are trademarks of Tripod Data Systems. Other brand names and trademarks are property of their respective owners. Color display images shown may vary slightly from actual display. Specifications subject to change.

SANDA 050827